

SETTING WHITE BALANCE TO GET BETTER PICTURES

White Balance Definition

- **White balance (WB) is the process of removing unrealistic color casts, so that objects which appear white in person are rendered white in your photo.**
- **Proper camera white balance has to take into account the "color temperature" of a light source, which refers to the relative warmth or coolness of white light.**

- **Viewing White letter Paper In The Store, We May Recognize The Variation of Whites Between Different Brands**
- **Viewing a Single Sheet of by Itself You will Most Likely See The Paper Only as White**
- **The camera However, Will Record The Subtle Shades of White**

Important Stuff

- **White Balance (WB) is one of the most challenging camera settings for beginners to use.**
- **White Balance can be difficult to fix later shooting JPGs.**
- **RAW Photo Files have a huge latitude for WB adjustment.**
- **White Balance can be Adjusted in the Camera & Computer**
- **Monitors Must Be Calibrated To Get Accurate Color Images for both JPG & RAW**

Automatic White Balance



Custom White Balance



Automatic White Balance



Custom White Balance



COLORCAST





Sodium vapour lamps
2700K



Cool White fluorescent
4200K



Flash
5400K



Daylight Fluorescent
6500K



Incandescent
3000K



Direct sunlight
5200K



Cloudy
6000K



Shade
8000K

2000K

3000K

4000K

5000K

6000K

7000K

8000K

9000K

COLOUR TEMPERATURE (Kelvin)

Incandescent

Standard fluorescent

Direct sunlight

Flash

Cloudy

Shade



WHITE BALANCE PRESETS

Your guide to what they do and when to use them



AUTO

A simple failsafe mode for snapshots, but the White Balance may vary from one shot to the next, and you may not get the colours you expect.



Incandescent

This is the closest match for regular domestic lighting, and will correct the colour much more effectively than auto White Balance.



Fluorescent

This comes in many different types and current D-SLRs offer no fewer than seven alternatives, so some trial and error may be needed.



Direct Sunlight

Calibrated to give neutral colours under midday sun – and you can use it as a fixed standard for recording colours as in other lighting conditions exactly as they are.



Flash

Flashguns have a cooler tone than direct

sunlight, and using this preset can prevent skin tones turning 'cold'.



Cloudy

Light has a cooler tone under a cloudy sky, and this preset will warm up the colours. It's good for portraits but can be too much for landscapes.



Shade

This is designed for open shade under a blue sky. This preset will give you more natural-looking skin tones.



K

More advanced D-SLRs let you set the White Balance colour temperature manually – useful with some studio lighting.



PRE

Sometimes it's impossible to predict the colour of the lighting and the effect of surrounding walls and their colours, but all digital SLRs let you take a manual measurement from a neutral surface and create a custom preset of your own.

CANON & NIKON WB SCREENS

White balance

Auto

AWB



SET OK

The LCD screen displays the following information:

- Mode: P
- Shutter speed: 1/60
- Aperture: F4
- ISO: 100
- White balance: WB AUTO (highlighted with a red box)
- Quality: FINE
- AF mode: AF-A
- ADL: ON
- Resolution: 1080
- Frame counter: [323]
- Buttons: SET, OK

CREATIVE WHITE BALANCE EXAMPLES



Fluorescent daylight camera setting



Custom white balance setting

Creative White Balance Examples



Auto white balance setting

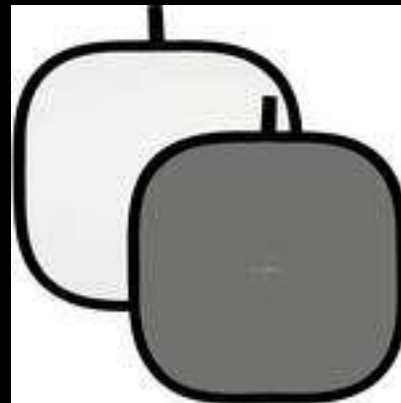
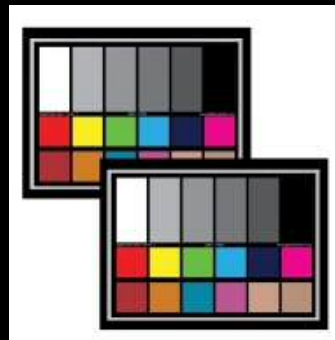


Daylight white balance setting



Shade white balance setting

TOOLS TO GET ACCURATE WB





**SHOW VIDEO HOW TO GET AN
IN CAMERA WHITE BALANCE**